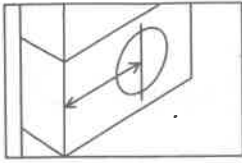
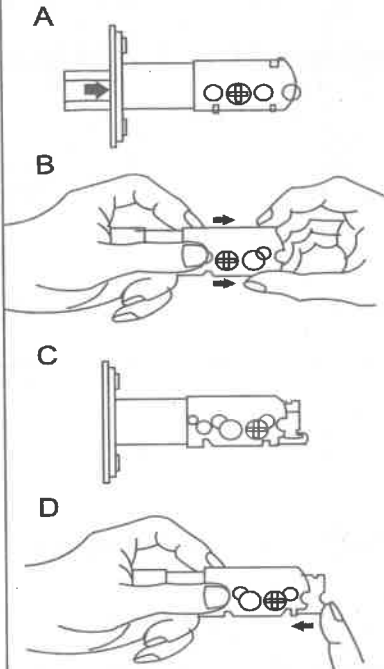


# INSTRUCTIONS FOR INSTALLATION OF FLAT DOUBLE CYLINDER DEADBOLTS

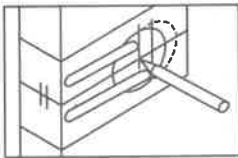
## INSTALLATION INSTRUCTIONS



Backset is a distance from door edge to center of hole on door face.  
Some locks are supplied with an adjustable latch which can fit 2 3/8" (60mm) or 2 3/4" (70mm) backset.  
Just follow the steps shown below to change backset.

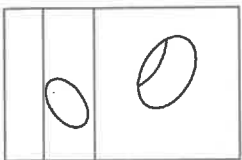


- Rotate latch crank to retract the latchbolt to the unlock position.
- Push the change lever up against the top. Hold torque plate and torque spring, then pull the extension plate all the way out. Be sure the 2 3/4" (70mm) screw hole is properly aligned and change lever jumps down to original position.
- Your latch is now set for 2 3/4" (70mm) set
- Latch may be adjusted back to 2 3/8" (60mm) backset by retracting the latchbolt, pushing up the change lever and moving the extension plate back to its original position.  
(NOTE: BE SURE THE 2 3/8" (60mm) SCREW HOLE IS PROPERLY ALIGNED AND CHANGE LEVER JUMPS DOWN TO ORIGINAL POSITION AFTER ADJUSTMENT.)



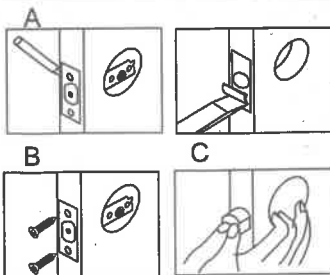
### 1. Mark Door with Template

Select 2 3/8" or 2 3/4" (60mm or 70mm) backset as desired and mark center of hole on door face.



### 2. Drill Holes

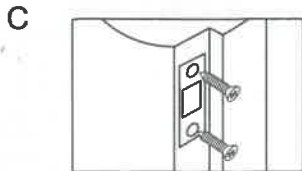
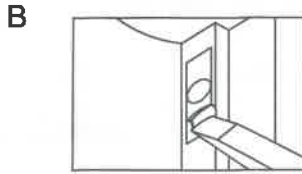
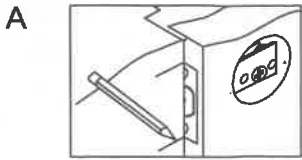
- Drill 54mm hole on door face, from both sides to avoid wood splitting
- Drill 25mm hole for latch



### 3. Install Latch

- Insert latch in hole, mark outline of face plate and chisel 1/8" deep.
- Insert latch and tighten screws.

# INSTALLATION INSTRUCTIONS

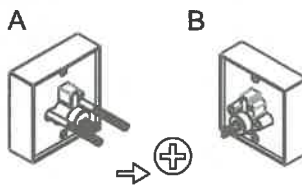


## 4. Install Strike

- Close door to make horizontal center line of strike.
- Measure one half of door thickness from door stop and vertically mark center line of strike. Drill 1" (25mm) hole 1" (25mm) deep at intersection of horizontal and vertical line of strike. Match screw holes on strike with center lines on jamb.

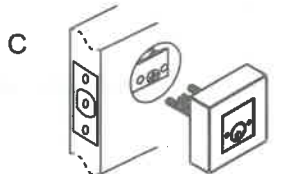
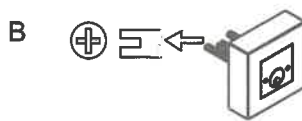
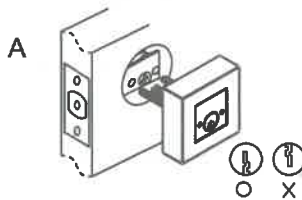
Mark outline and chise 1/16" (1.6mm) deep for strike.

- Install strike and tighten screws.



## 5. Install Exterior Cylinder-Double Cylinder

Press exterior cylinder flush against door. Exterior torque blade should be horizontally inserted into latch crank first.



## 8. Install Interior Cylinder-Double Cylinder

- Press interior assembly flush against door, making certain the torque blade is properly positioned in latch crank. Key hole should be in down position.
- The interior torque blade is inserted into the exterior blade.
- Tighten screws with allen key provided.

Fold on line and fit on edge

1 2/4" (45mm)    1 9/16" (40mm)    1 3/8" (35mm)

For backset 2 3/4" (70mm)  
 For backset 2 3/8" (60mm)  
 Fits 2 1/8" (54mm) cylinder hole

