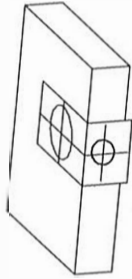


Installation Instructions

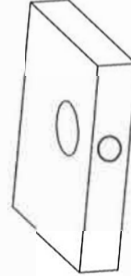
1: Mark Door

- A. Fold and apply installation template to edge of door and mark centre of door edge as indicated on the template at the desired height.
- B. Mark centre hole on the door face through guide on template for 60mm (2 3/8") backset or 70mm (2 3/4") backset.



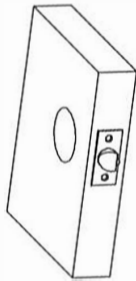
2: Drill holes

- A. Drill 25mm (1") hole in edge of door to the depth of the entire Latch.
- B. Drill through door face as marked for the lock body. It is recommended that a pilot hole be drilled through the door first then drill the 54mm (2 1/8") hole from both sides of the door.

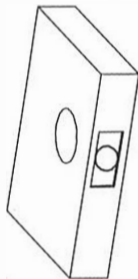


3: Install Latch

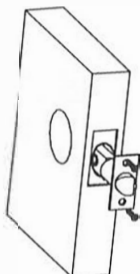
- A. Insert Latch in hole, ensure the face plate is parallel to door edge. Mark outline of the face plate and remove Latch.



- B. With a Chisel, mortise the latch faceplate into the edge of the door until it is flush with door edge.

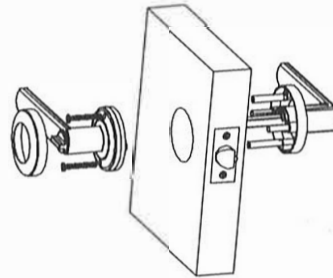


- C. Install Latch into position in door edge. Drill and install fixing screws.

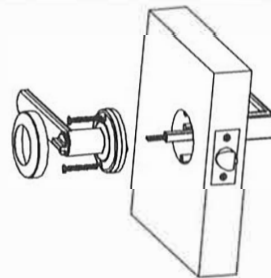


4: Install Lock Body

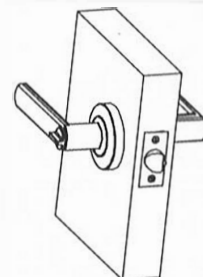
- A. Insert the external handle through the Latch into position.



- B. Insert the internal handle into position ensuring the the locking bar is located into the turn button. This can be checked by turning the turn button to ensure the it locks & unlocks the handles.



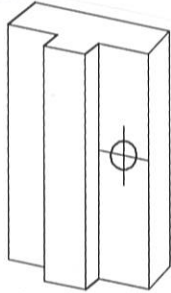
- C. Screw both handles into position, check that the lock is working correctly and install the cover rosette.



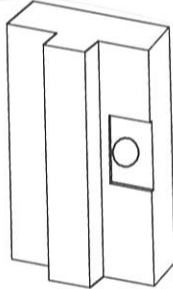
Installation Instructions

5: Install Strike Plate

- A. Close door mark centre line of the bolt on jamb. Open door and extend mark to the door stop. Measure back from door stop half the door thickness and mark.



- B. Drill 25mm (1") hole, 12 to 15mm (5/8") deep at centre mark on Jamb.



- C. Align strike plate and mark out line chisel 3mm (1/8") deep or until strike plate is flush with jamb.

